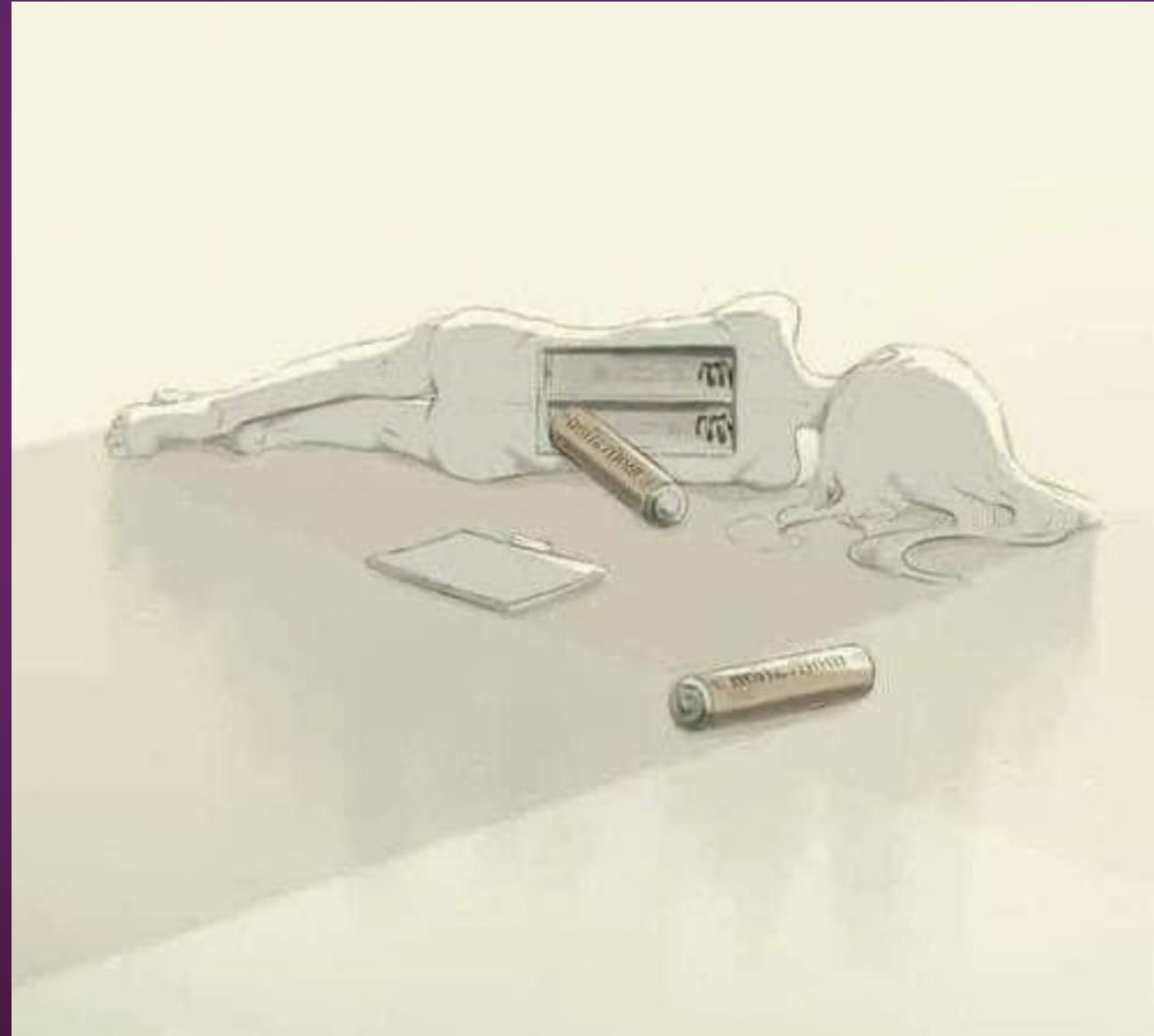


Patient talk: Perspectives of PDPH

Julie Schmitz, CRNA, ACNP



Is PDPH Really Self-Limiting?



Symptoms:

- Postural Occipital Headache
- Neck and Interscapular Pain
- Autonomic Dysfunction (POTS)
- Dizziness and Vertigo
- Blurred Vision
- Tinnitus
- Muffled Hearing (underwater)
- Hearing Loss
- Facial and Throat Numbness
- Cognitive Dysfunction
- Photophobia
- Phonophobia
- Postural Tremors
- Sleep Apnea
- Awake Breath Holding Episodes
- New Motion Sickness

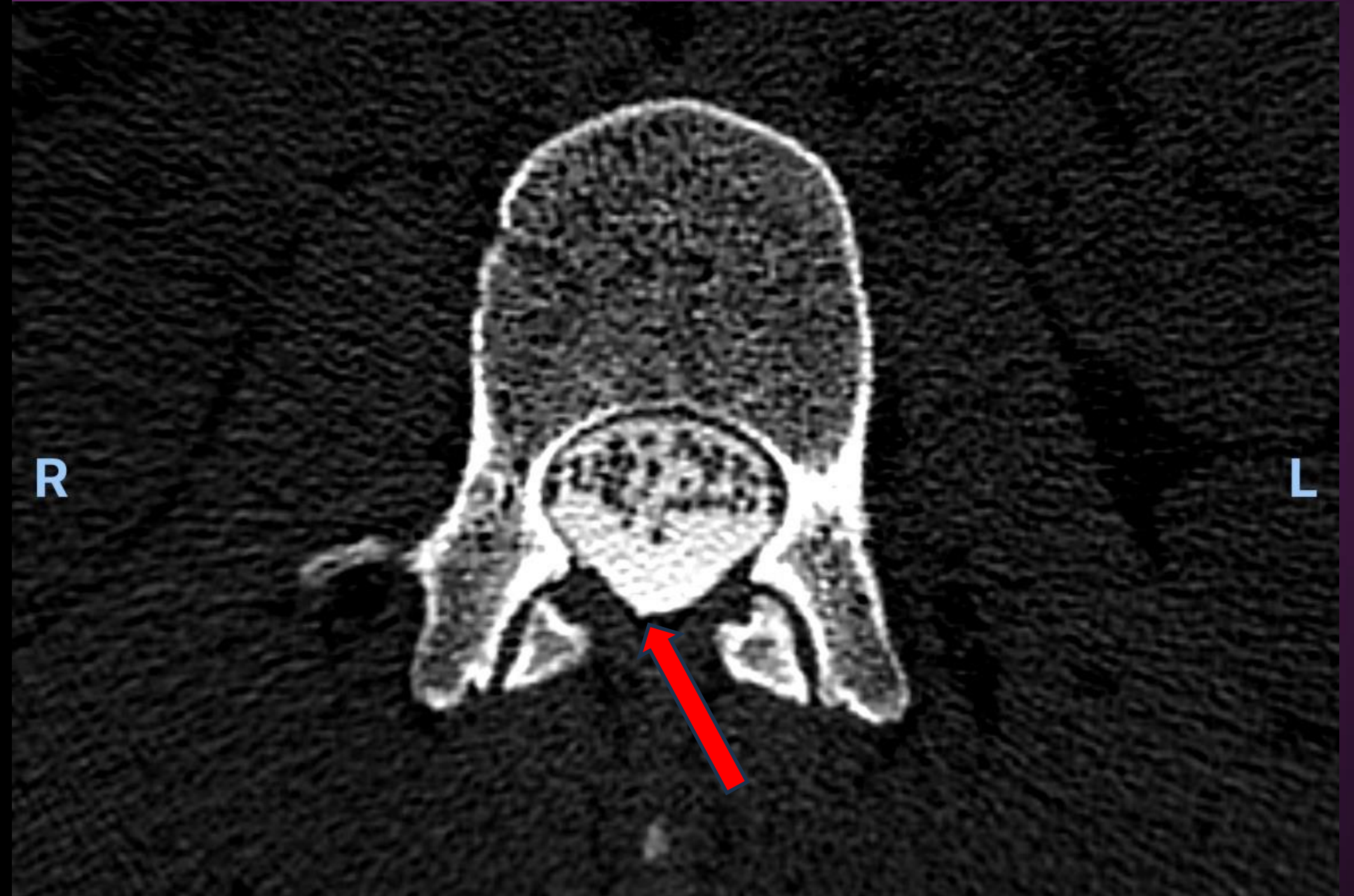
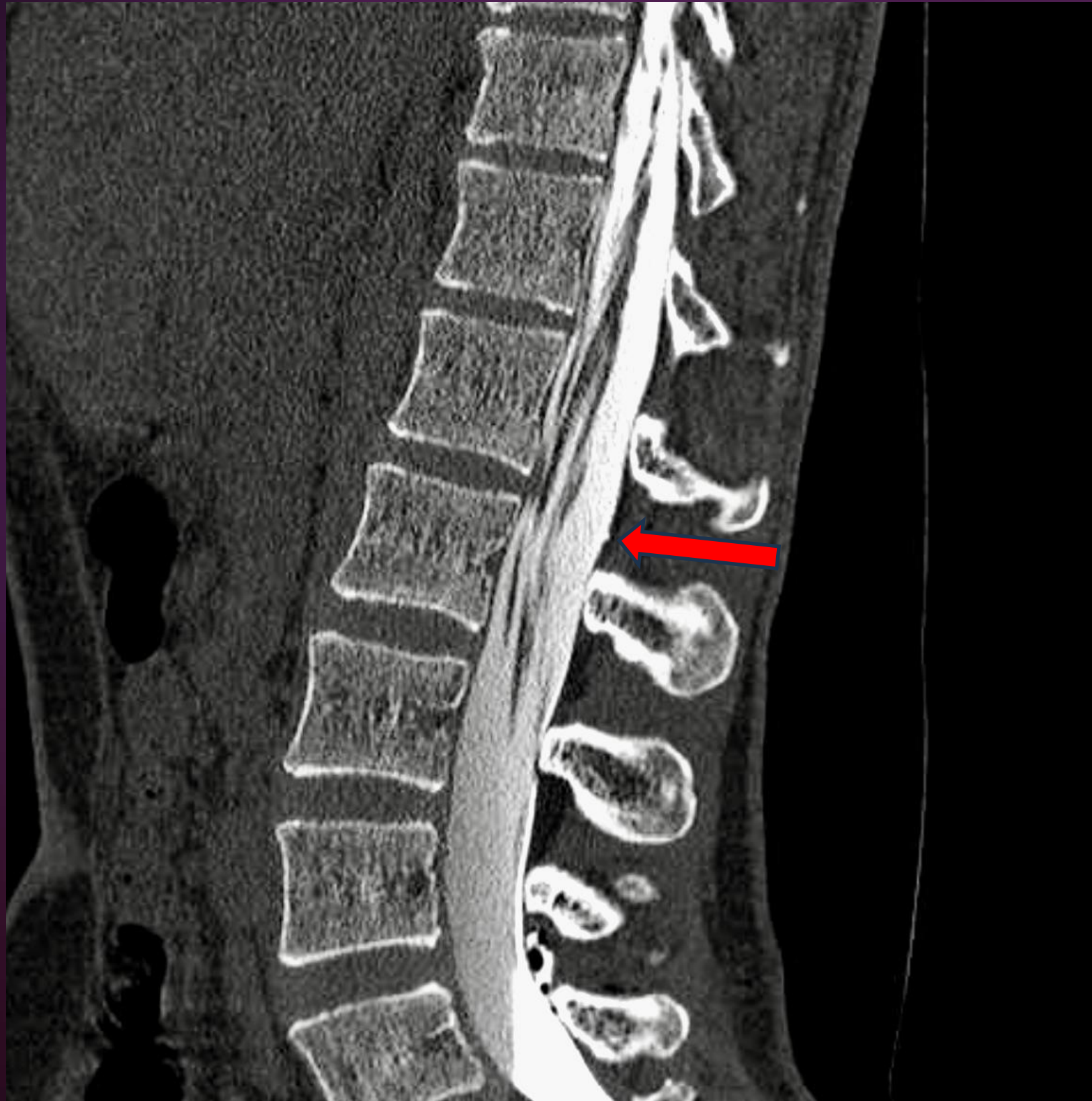


Patches and Procedures:

- “Blind” Epidural Blood Patch
- Fluoroscopic Guided Epidural Blood Patch
- Multilevel CT Guided Circumferential Epidural Blood Patch w/ Fibrin
- Multilevel CT Guided Circumferential Epidural Blood Patch w/ Fibrin
- CT Myelogram
- L1-L3 Exploratory Laminectomy with Dural Repair
- CT Guided Epidural Blood Patch with Fibrin



CT Myelogram



Dural Outpouching at L1-2 indicated by red arrows on sagittal (left) and axial views (right)



When Should Follow-Up Occur?



How Motherhood Looks with a PDPH



CSF Leaks are Devastating



WELL IT'S GROUNDHOG DAY



.....AGAIN!

imgflip.com

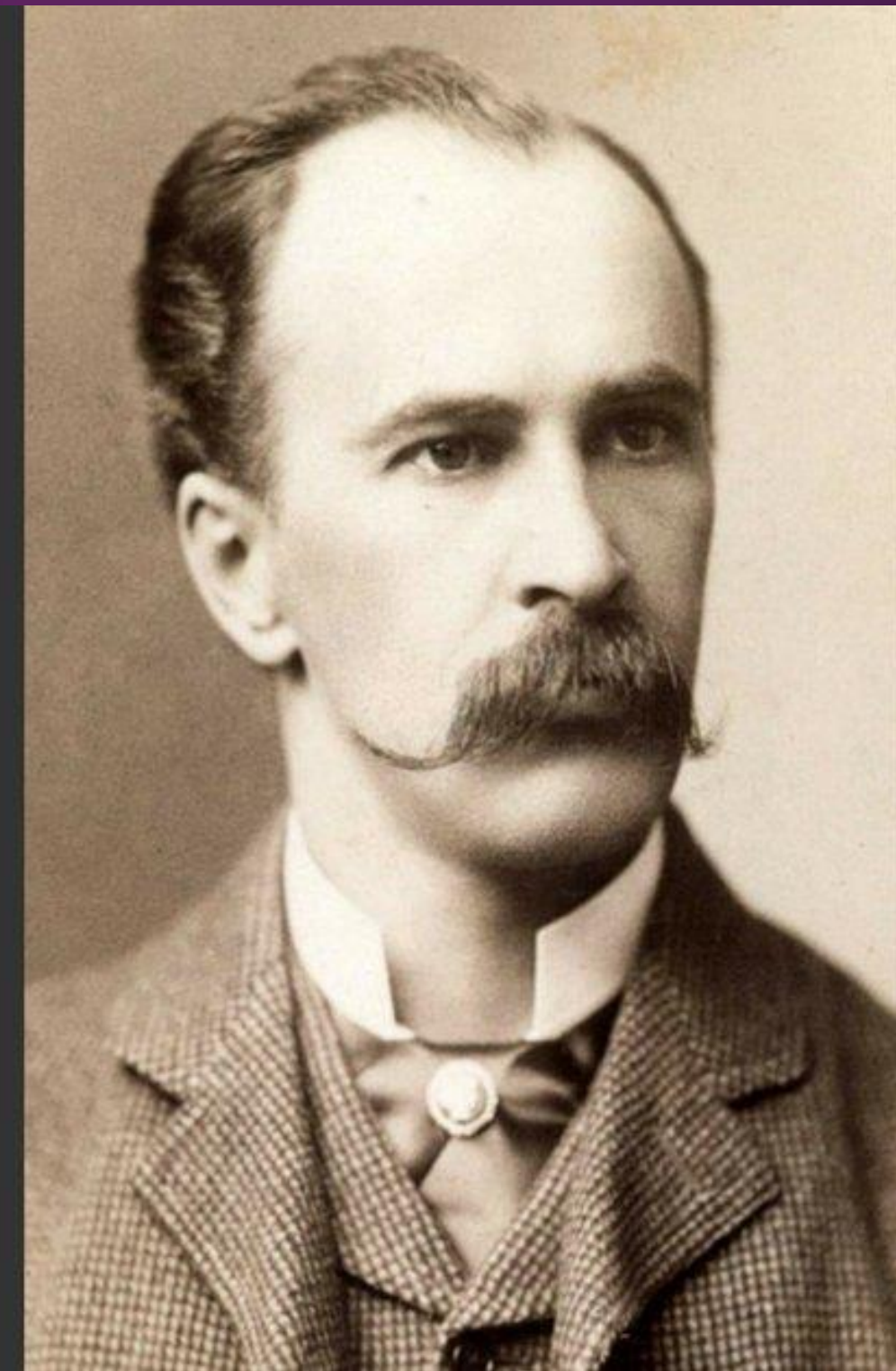


Bridging the Gap

*"The good physician
treats the disease; the
great physician treats the
patient who has the
disease."*

William Osler

Founding Professor, Johns Hopkins Hospital



Bridging the Gap

Remember What Is At Stake...



Thank You!