

Spontaneous Intracranial Hypotension Pain Management and Post-RX Pain



Philip Peng MBBS FRCPC Founder (Pain Medicine)
Professor, Anesthesiology and Pain Management
Toronto Western Hospital,
University of Toronto

Spontaneous Intracranial Hypotension Pain Management and Post-RX Pain

Town hall format

What is pain experience?

1. What to do for pain management while you are waiting for test or treatment?
2. If drugs and simple measure does not work, what about intervention, CAM, Mindfulness
3. After a successful surgery, pain persist. What should you do?

DISCLOSURE



Philip Peng Educational Series



1. Ascending Pathway
 2. Descending Pathway
 3. Visceral Pain
 4. Brain Imaging
- With 24 videos and 25 illustrations



Three Classical Teaching Slides

Definition of Pain (IASP)

- An unpleasant sensory and emotional experience associated with actual or potential tissue damage, or described in terms of such damage.

Definition of Pain (IASP)

- An **unpleasant** sensory and emotional experience associated with actual or potential tissue damage, or described in terms of such damage.

Definition of Pain (IASP)

- An **unpleasant** sensory and emotional experience associated with actual or potential tissue damage, or described in terms of such damage.

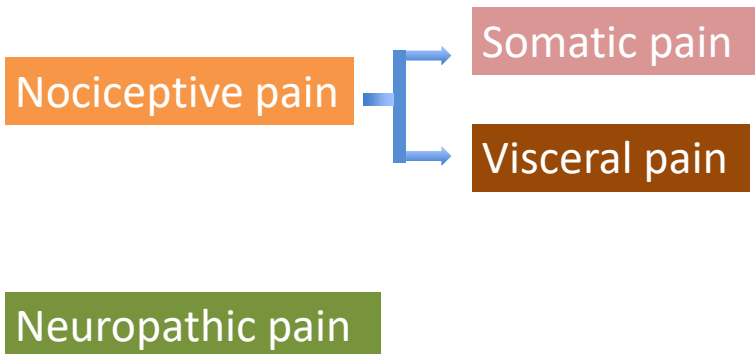
Definition of Pain (IASP)

- An **unpleasant** sensory and emotional experience associated with actual or **potential** tissue damage, or described in terms of such damage.

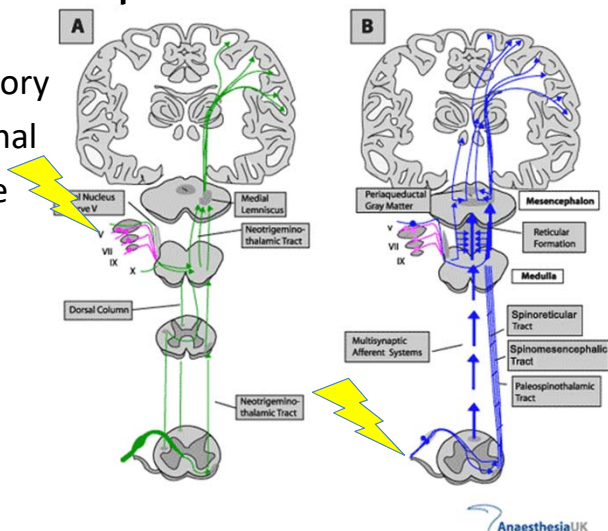
Definition of Pain (IASP)

- An **unpleasant** sensory and emotional experience associated with actual or **potential** tissue damage, or **described in terms of such damage**.

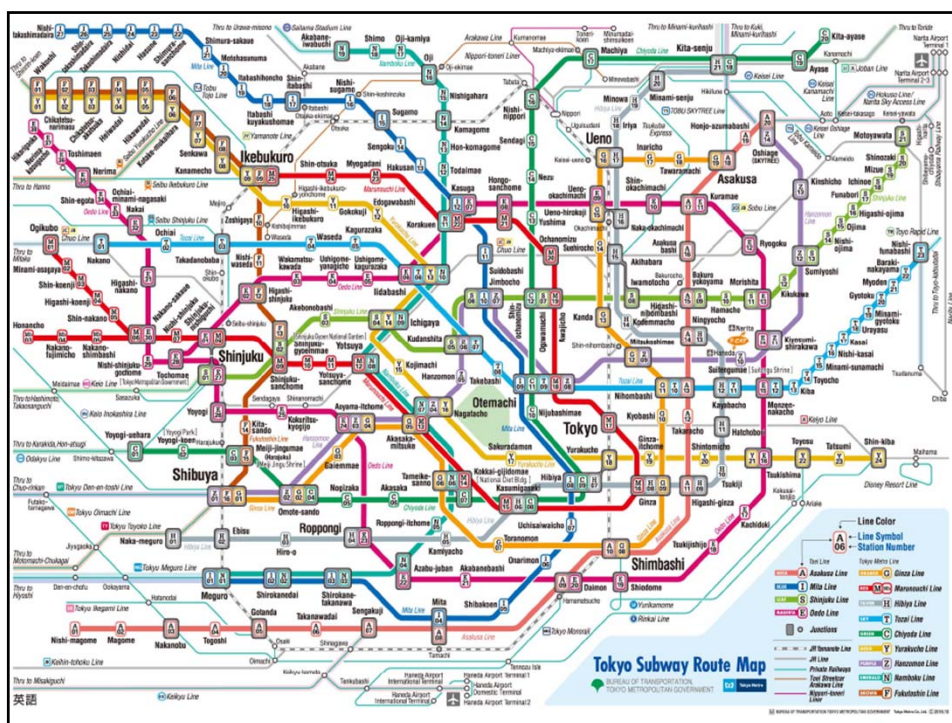
Classification of Pain

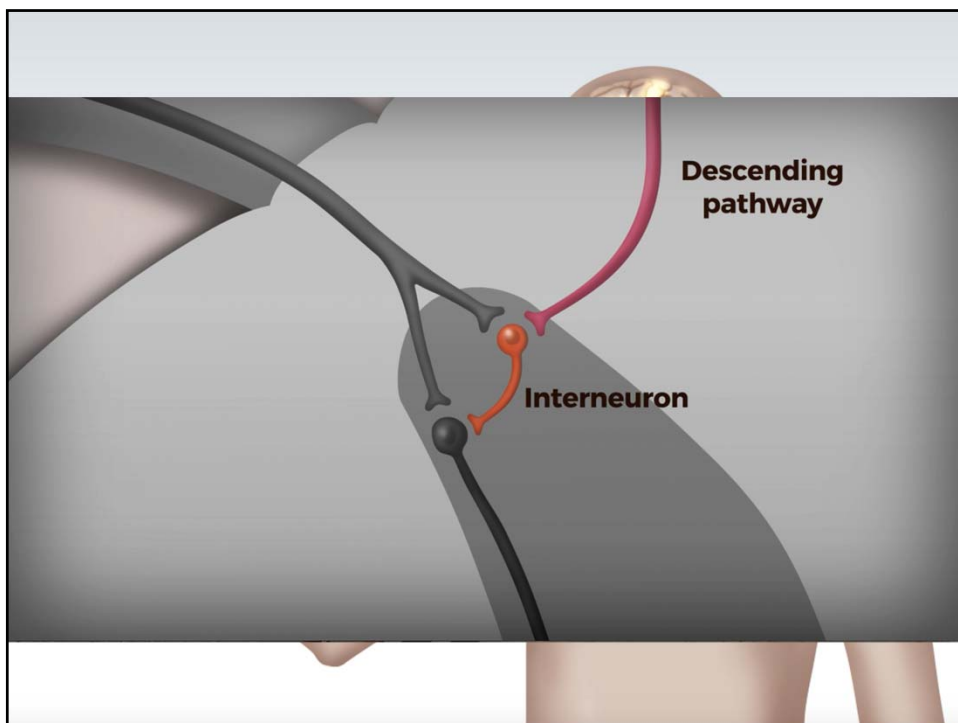
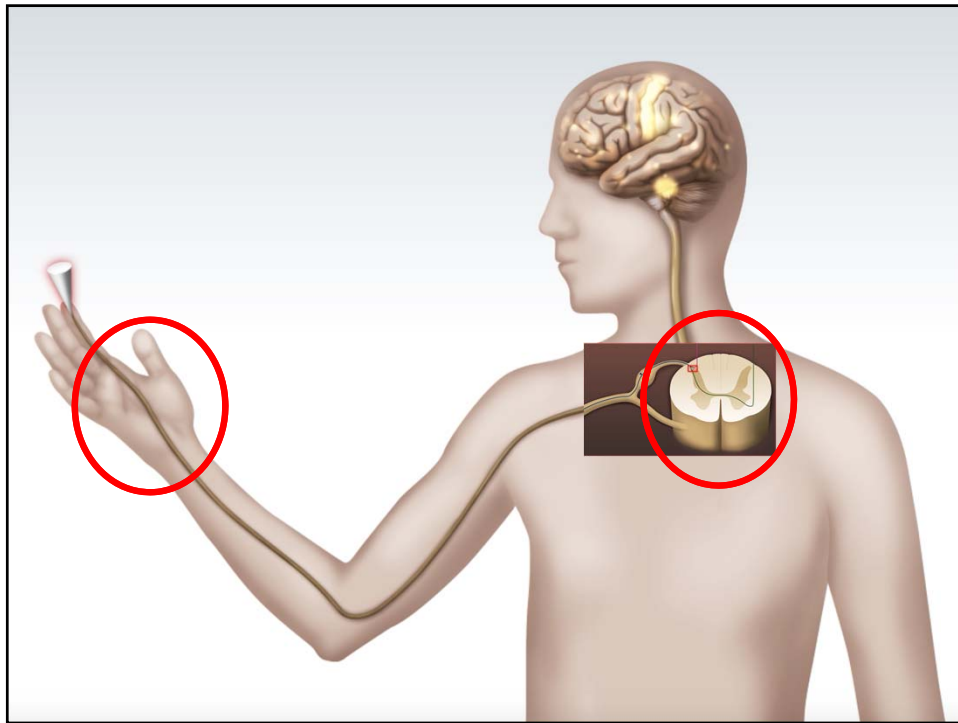


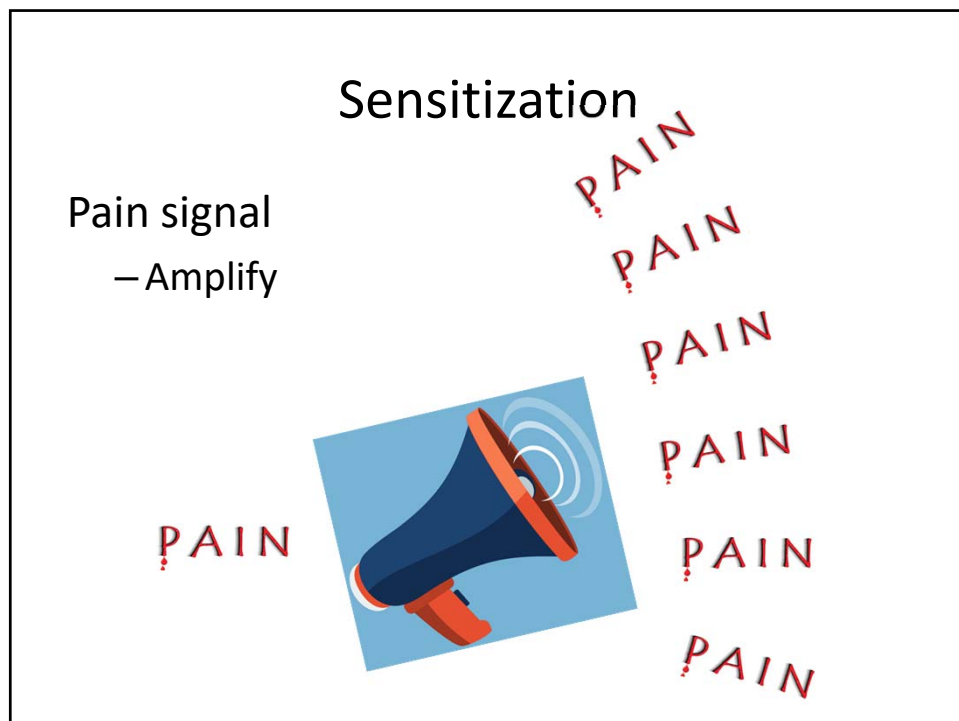
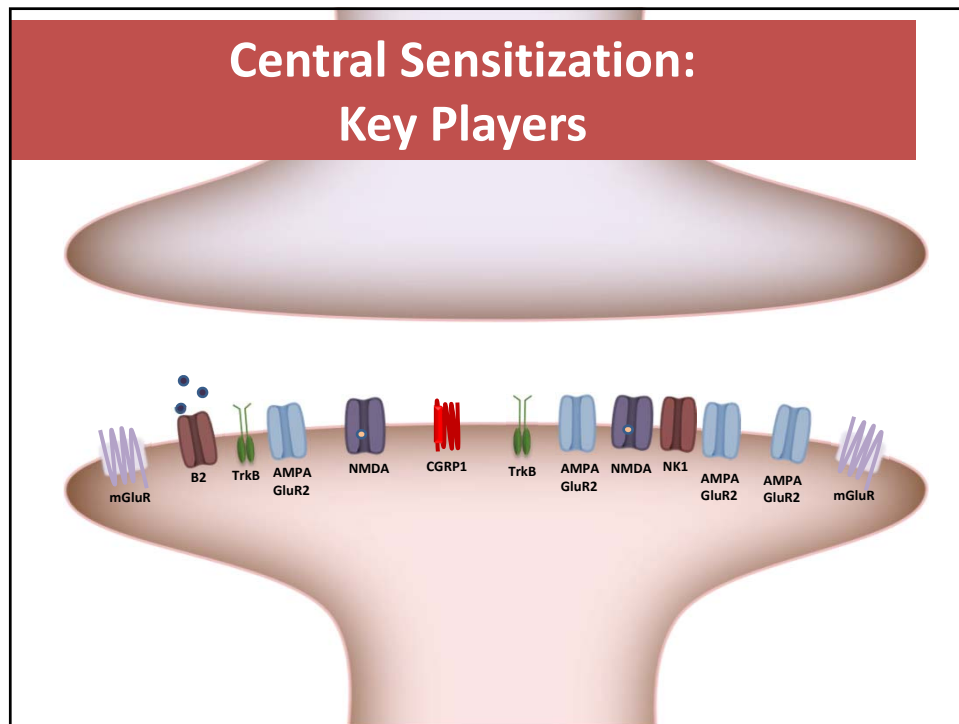
- Sensory-discriminatory
- Affective-motivational
- Cognitive-evaluative



Duerden EG, et al. Human Brain Mapp 2013; 34:109-49







Sensitization

Pain signal

- Amplify
- Modify



=



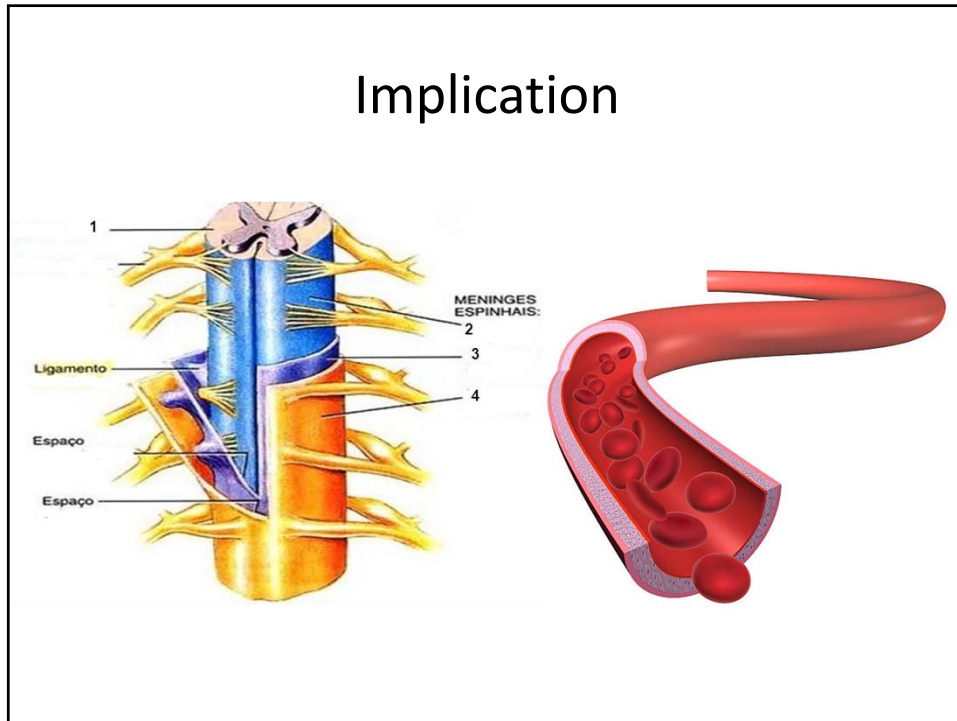
Sensitization

Pain signal

- Amplify
- Modify
- Memorize



Implication



Definition of Pain (IASP)

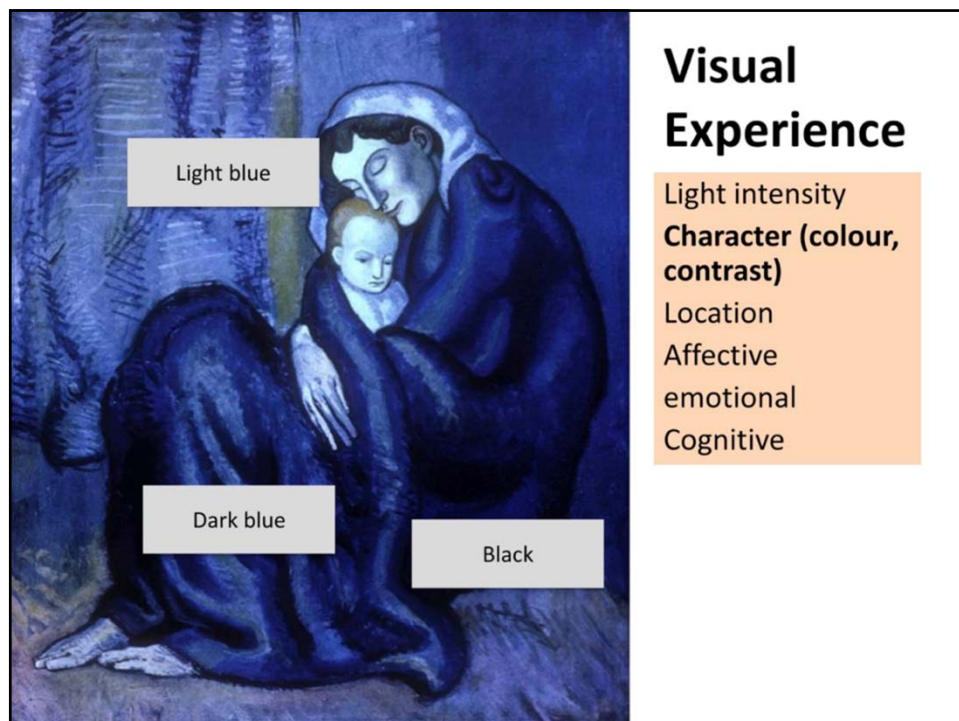
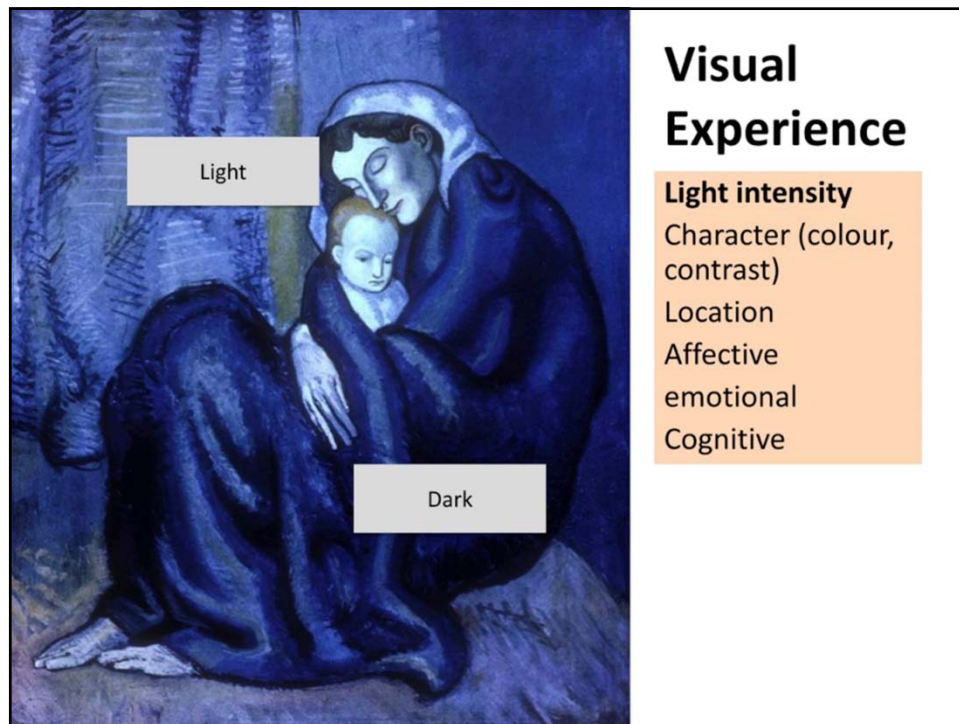
- An **unpleasant** sensory and emotional experience associated with actual or **potential** tissue damage, or **described in terms of such damage**.


Pain Experience

Pain intensity
Character (e.g. Shooting, burning,
intermittent, constant)
Location
Affective
emotional
Cognitive

Pain Experience

Pain intensity
Character (e.g. Shooting, burning,
intermittent, constant)
Location
Affective
emotional
Cognitive





Love

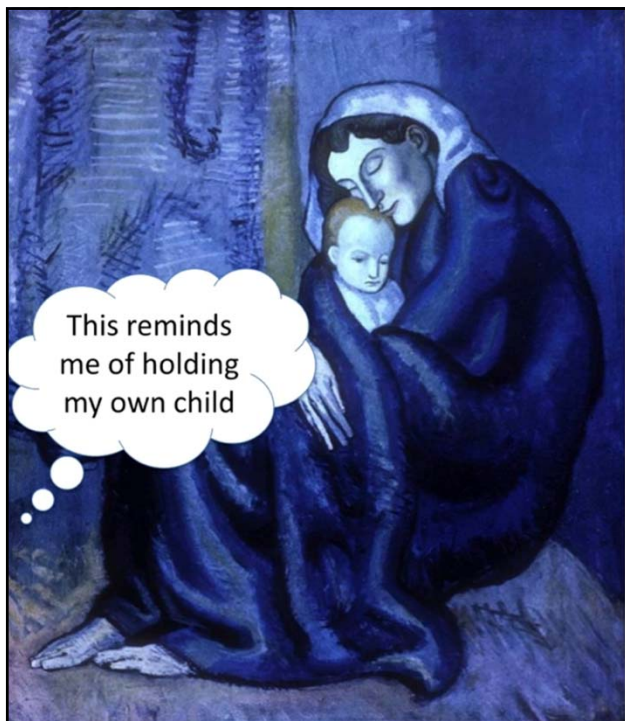
Lonely

Calm

Cold

Visual Experience

Light intensity
Character (colour, contrast)
Location
Affective
emotional
Cognitive



This reminds me of holding my own child

Visual Experience

Light intensity
Character (colour, contrast)
Location
Affective
emotional
Cognitive

Pain Experience

Visual Experience

Pain intensity

Character (e.g. Shooting, burning, intermittent, constant)

Location

Affective
emotional

Cognitive

Light intensity

Character (colour, contrast)

Location

Affective
emotional

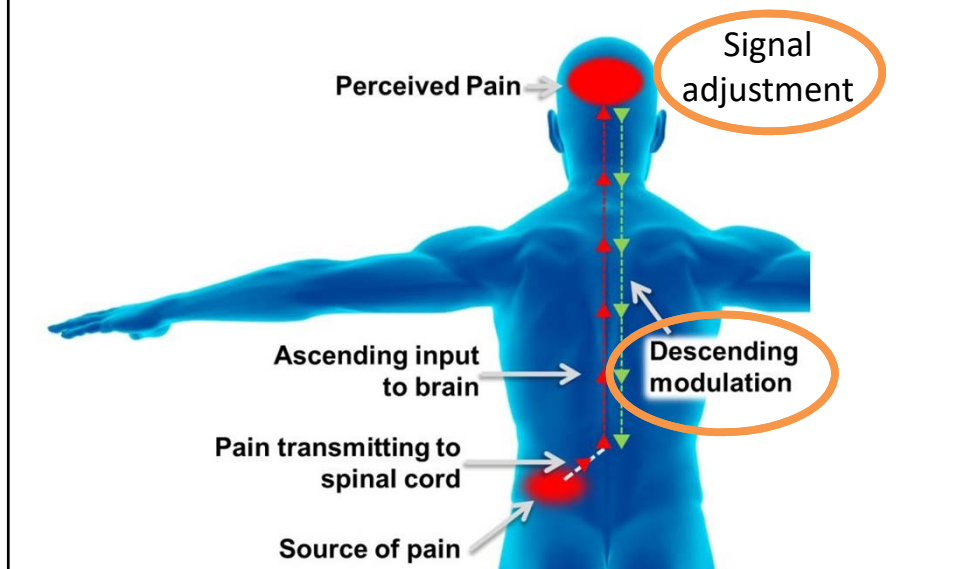
Cognitive



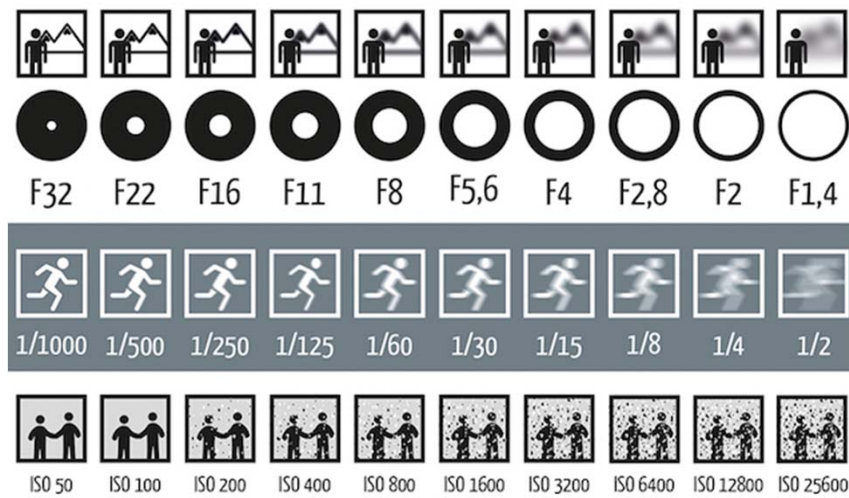
Definition of Pain (IASP)

- An **unpleasant** sensory and emotional experience associated with actual or **potential** tissue damage, or **described in terms of such damage**.

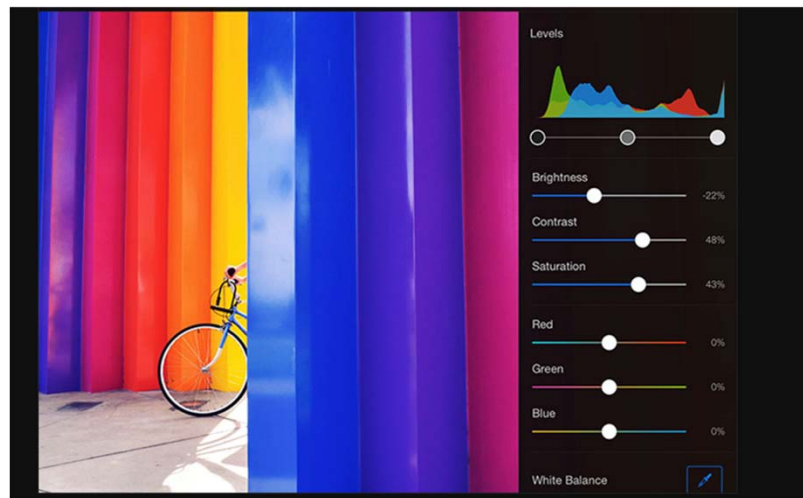
Nociception & Pain

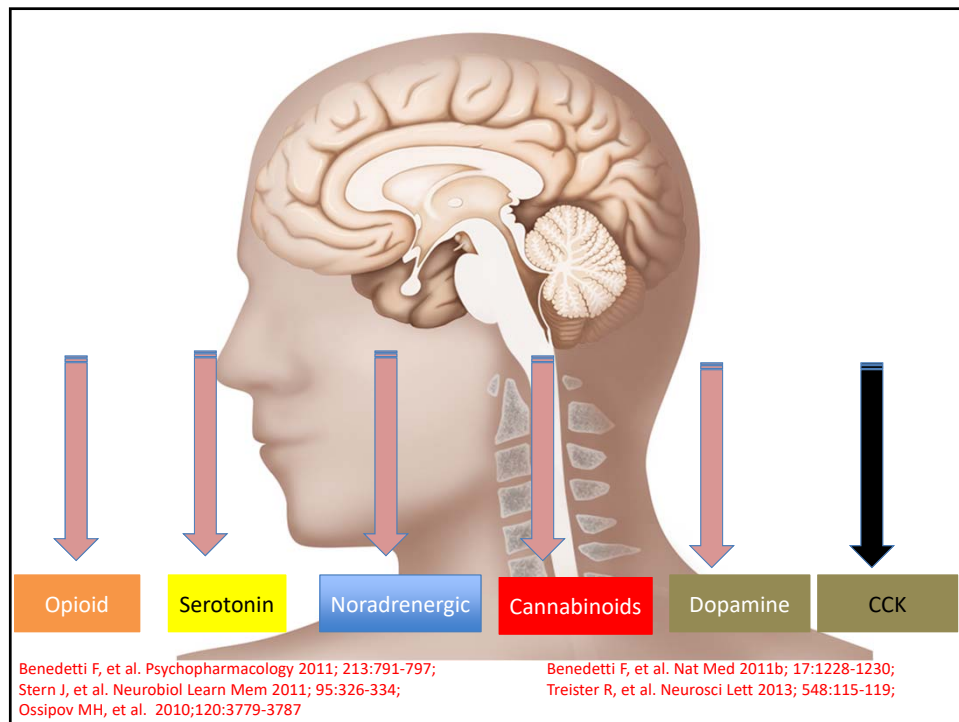


Photography



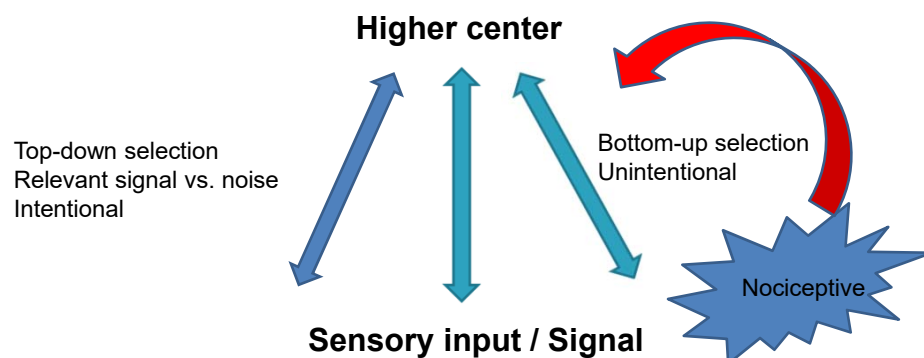
Photography





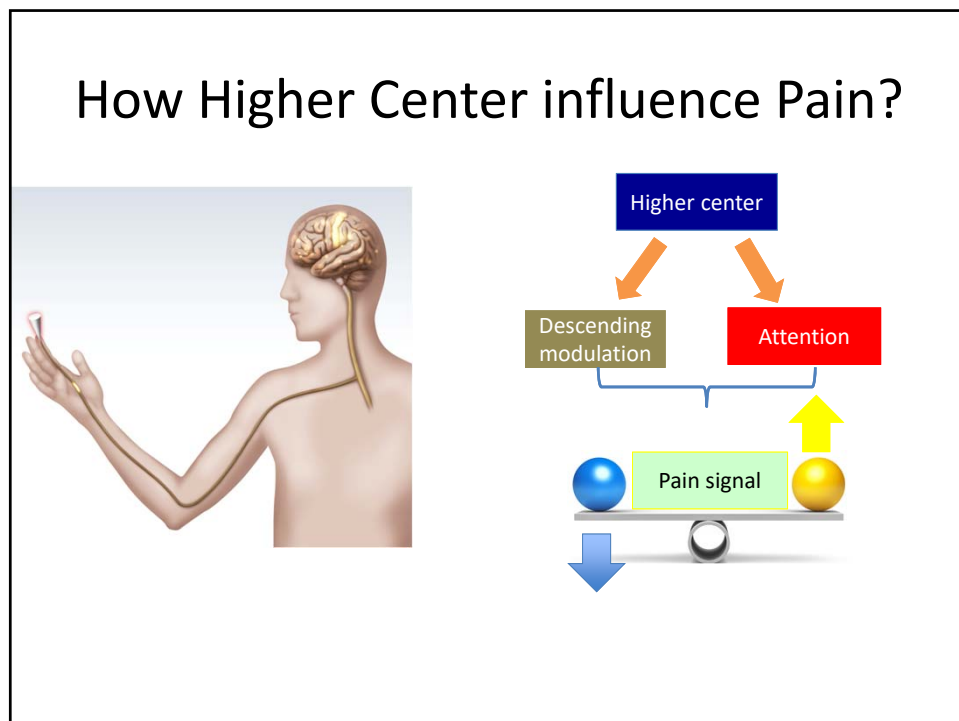
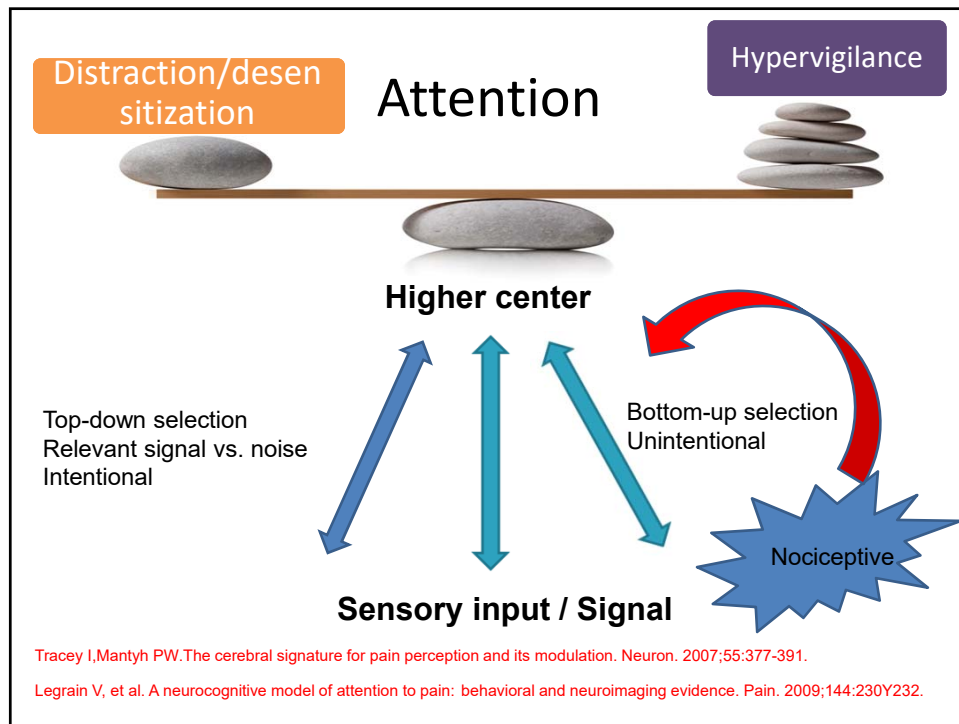
Attention

- mechanism by which sensory events are selected and enter awareness



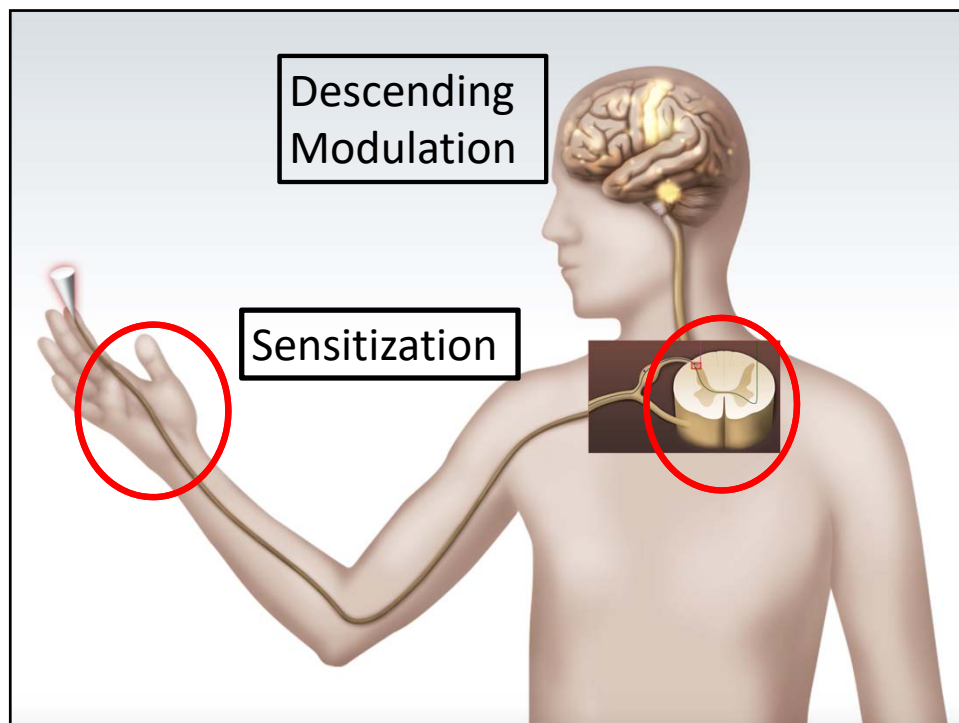
Tracey I, Mantyh PW. The cerebral signature for pain perception and its modulation. Neuron. 2007;55:377-391.

Legrain V, et al. A neurocognitive model of attention to pain: behavioral and neuroimaging evidence. Pain. 2009;144:230Y232.

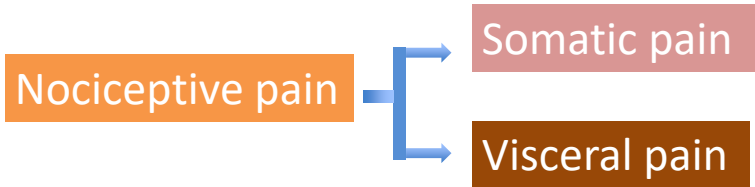


Implication

Mindfulness,
Cognitive behavior program
Yoga



Classification of Pain



Neuropathic pain

Pain that arises from altered nociception despite no clear evidence of actual or threatened tissue damage causing the activation of peripheral nociceptors or evidence for disease or lesion of the somatosensory system causing the pain

Nociplastic pain

Thank You